

Customer :

customer

Customer part :

customer part

Comment :

Comment

S1=0.02

S2=0.07

Tmax=320

Tp S2=359.0

PI=0.21

HI=64

Sample =8077.1

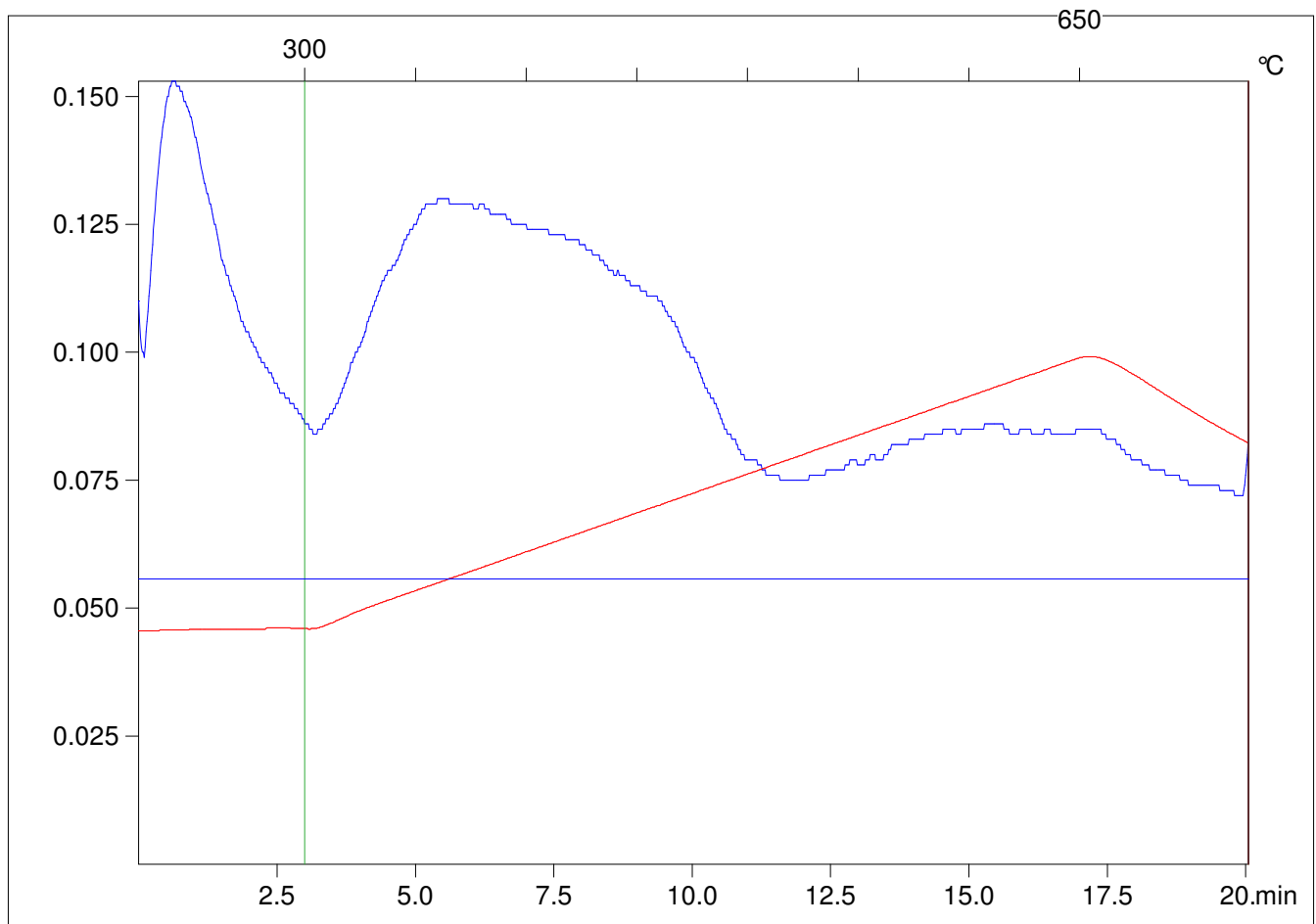
Method =Bulk Rock

Cycle=Basic

KFID(10*9)=1167

Qty =69.9

TOC=0.11



C:\VINC\PK141015\PK022.R00 : FID pyrolysis graphic

State

Pyro Status

Oxi Status